



# UNITRUNK

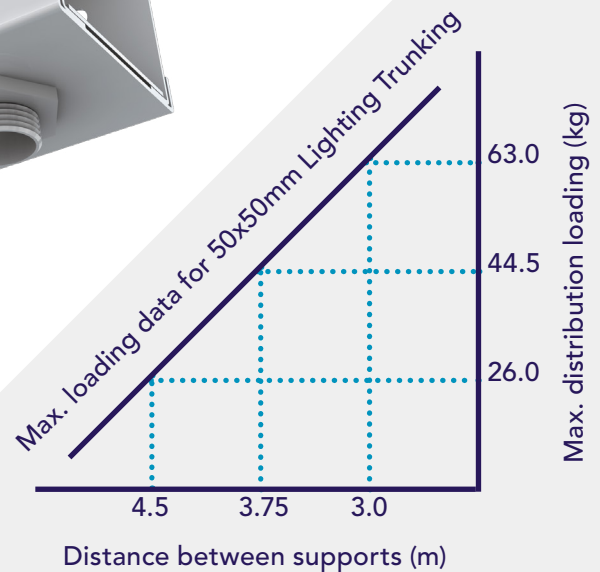
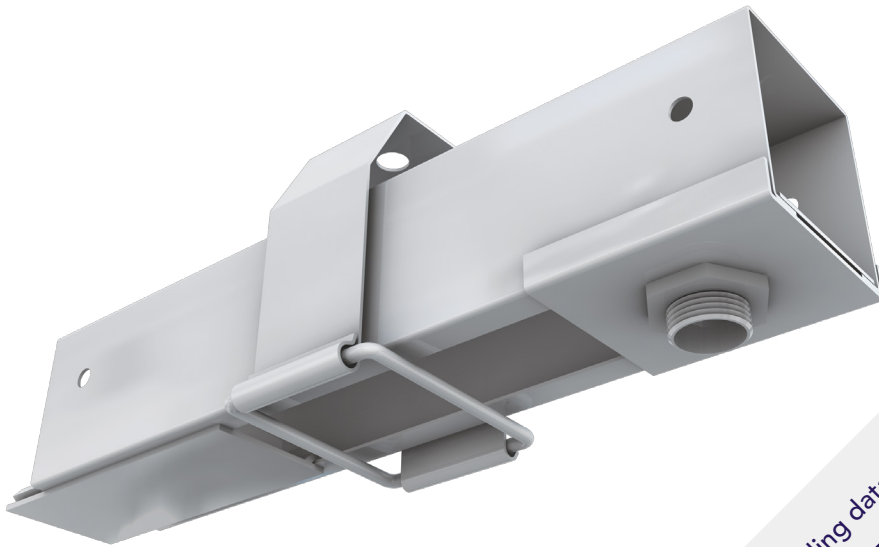
## SECTION 03: LIGHTING TRUNKING SYSTEMS

Unitrunk Lighting Trunking is manufactured from galvanised sheet steel to BS EN 10346.

QuickFix Cable Trunking fittings can be used with Unitrunk's Lighting Trunking Range, enabling the two types to be easily interconnected in order to simplify installation and wiring.

QuickFix Cable Trunking range is tested in accordance with BS EN 50085.

For Fittings and Accessories, please refer to Section 1 - QuickFix Trunking.



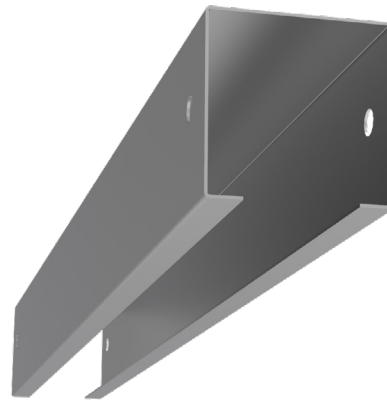
ACCREDITED TO THE FOLLOWING STANDARDS:



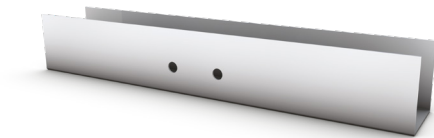
Lighting Trunking

Part Code	Size (mm)	Length (m)
LT223	50 x 50	3
LT223.5	50 x 50	3.5
LT224.5	50 x 50	4.5
LT226	50 x 50	6

Other sizes available on request.

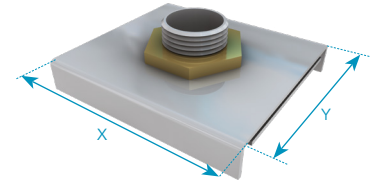


Long Coupler



Part Code	Size (mm)
LCL22	50 x 50

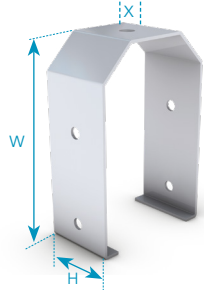
Fitting Suspension



Part Code	Size (mm)	X (mm)	Y (mm)
FSL22	50 x 50	62	55

With Brass Bush and Steel Lock Nuts.

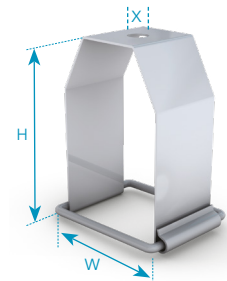
Hanger Bracket



Part Code	W (mm)	H (mm)	X (mm)
HBL22(X)	85	55	10 or 20

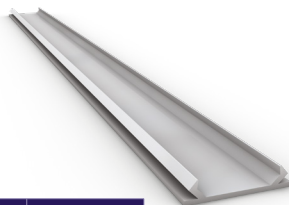
Other sizes available on request.

Hanger Bracket (with Swing Bar)  
Size 50mm x 50mm



Part Code	W (mm)	H (mm)	X (mm)
HBL22SP(X)	55	85	10 or 20

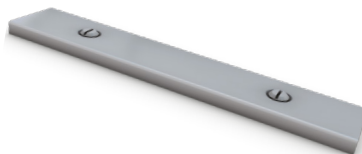
Galvanised Snap-In Lid



Part Code	Size (mm)
GCL2	50

Supplied in 2m lengths.

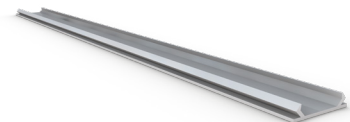
Galvanised Steel Lid



Part Code	Size (mm)
GSL2	50

Supplied in 3m lengths.

White Plastic Snap-In Lid



Part Code	Size (mm)
WPL22	50

Supplied in 3m lengths.

QuickFix Trunking

QuickFix Multi Compartment Trunking

Lighting Trunking

Uniklip Cable Tray

Speedway Cable Ladder Pre-Galv. Cable Ladder

Cable Basket Systems

Channel & Support

Accessories & Supports

Index