

SECTION 02: QUICKFIX MULTI- COMPARTMENT TRUNKING SYSTEMS




With Multi-Compartment Trunking, dividing fillets are normally supplied spot-welded in position, but can also be supplied loose for fixing on-site by drilling and screwing. Spot welds can be treated with Norgalv paint as an extra on request. Purpose-made trunking can be supplied with conduit entries at pre-determined regular intervals in sides and in dividing fillets.

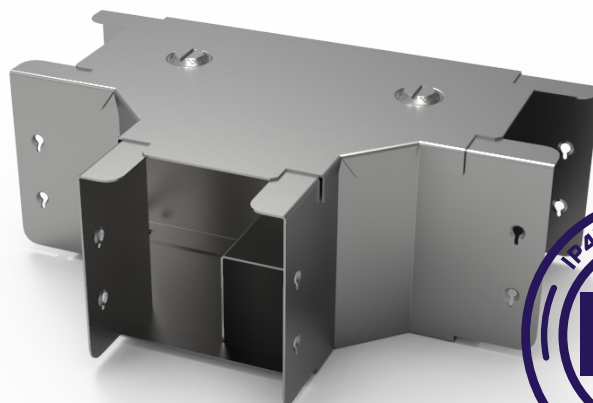
Bends, Tees, Intersections, etc. are supplied complete with Dividing Fillets. Tees with Top Lids and Intersection Boxes are supplied with fitted Cross-over Bridges.

Example Tee and Bend assemblies with unequal compartments are shown in this section.

Three, four or more compartment trunking is available.

Available in various materials and finishes:

-  Pre-galvanized structural steel (BS EN 10346)
-  Stainless steel grade 1.4404** (316L marine, BS EN 10088-2)
-  Zinc Magnesium coated steel (BS EN 10346)

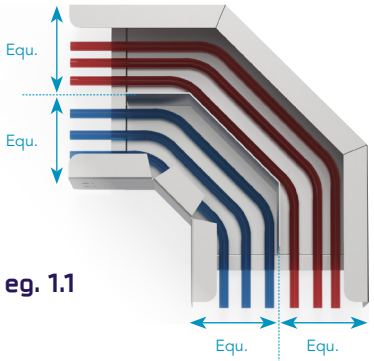


ACCREDITED TO THE FOLLOWING STANDARDS:

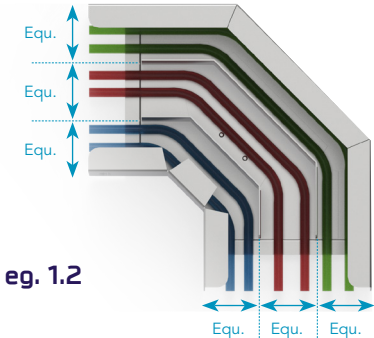


HOW TO ORDER

Example 1: Gussett Bend Top Lid (GTB)



eg. 1.1



eg. 1.2

Equal compartments

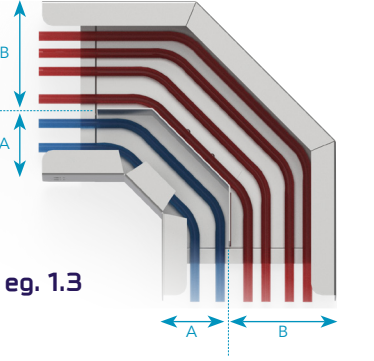
In the instance where all compartments are equally proportioned, please use the following order code format:

STEP 1:
Product Type

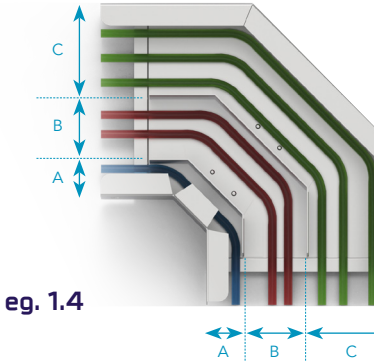
STEP 2:
Size Code

STEP 3:
Compartment Qty.

Example	Part Code	Description
eg. 1.1	GTB66x2	GTB, Size 6x6, 2 compartments
eg. 1.2	GTB44x3	GTB, Size 4x4, 3 compartments



eg. 1.3



eg. 1.4

Unequal compartments

In the instance where all compartments are unequally proportioned please use the following order code format, giving dimensions of A,B,C,D as applicable, to the Customer Service team,

STEP 1:
Product Type

STEP 2:
Size Code

STEP 3:
Compartment Qty.

STEP 4:
Unequal Code

Give A,B, etc. dimensions to Unitrunk Rep.

Example	Part Code	Description
eg. 1.3	GTB66x2U	GTB, Size 6x6, 2 compartments, unequal (A, B)
eg. 1.4	GTB44x3U	GTB, Size 4x4, 3 compartments, unequal (A, B, C)

Example 2: Gussett Tee Top Lid (GTT)

eg. 2.1

eg. 2.2

Equal compartments

In the instance where all compartments are equally proportioned, please use the following order code format:

STEP 1:
Product Type

STEP 2:
Size Code

STEP 3:
Compartment Qty.

Example	Part Code	Description
eg. 2.1	GTT66x2	GTT, Size 6x6, 2 compartments
eg. 2.2	GTT44x3	GTT, Size 4x4, 3 compartments

eg. 2.3

eg. 2.4

Unequal compartments

In the instance where all compartments are unequally proportioned please use the following order code format, giving dimensions of A,B,C as applicable, to the Customer Service team,

STEP 1:
Product Type

STEP 2:
Size Code

STEP 3:
Compartment Qty.

STEP 4:
Unequal Code

Give A,B, etc. dimensions
to Unitrunk Rep.

Example	Part Code	Description
eg. 2.3	GTT66x2U	GTT, Size 6x6, 2 compartments, unequal (A, B)
eg. 2.4	GTT44x3U	GTT, Size 4x4, 3 compartments, unequal (A, B, C)

Example 3: Intersection Box (ITB)

eg. 3.1

eg. 3.2

Equal compartments

In the instance where all compartments are equally proportioned, please use the following order code format:

STEP 1:
Product Type

STEP 2:
Size Code

STEP 3:
Compartment Qty.

Example	Part Code	Description
eg. 3.1	ITB33x2	ITB, Size 3x3, 2 compartments
eg. 3.2	ITB66x3	ITB, Size 6x6, 3 compartments

eg. 3.3

Unequal compartments

In the instance where all compartments are unequally proportioned please use the following order code format, giving dimensions of A,B,C,D as applicable, to the Customer Service team,

STEP 1:
Product Type

STEP 2:
Size Code

STEP 3:
Compartment Qty.

STEP 4:
Unequal Code

Give A,B, etc. dimensions to Unitrunk Rep.

Example	Part Code	Description
eg. 3.3	ITB63x4U	ITB, Size 6x3, 4 compartments, unequal (A, B, C, D)

QuickFix Multi Compartment Trunking

Lighting Trunking

Uniklip Cable Tray

Speedway Cable Ladder Pre-Galv. Cable Ladder

Cable Basket Systems

Channel & Support

Accessories & Supports

Index

QUICKFIX MULTI-COMPARTMENT TRUNKING

STEP 1: Choose finish



ZINC MAGNESIUM



PRE-GALVANISED



STAINLESS STEEL

**

STEP 2: Choose product

Part Code	Product Name
TK	Trunking (3m lengths)*
TS	Cover Strap (Width only)
TKHDB	Trunking to Channel Bracket (Height only)
GSL	Galvanised Steel Lid (Width only)
TC	Trunking Coupling
DF	Dividing Fillet - Loose (Height only)
GTB	Gusset Bend Top Lid
GIB	Gusset Bend Inside Lid
GOB	Gusset Bend Outside Lid
STE	Sharp Elbow Top Lid
SIE	Sharp Elbow Inside Lid
SOE	Sharp Elbow Outside Lid
GTT	Gusset Tee Top Lid
GIT	Gusset Tee Inside Lid
GOT	Gusset Tee Outside Lid
STT	Sharp Tee Top Lid
SIT	Sharp Tee Inside Lid
SOT	Sharp Tee Outside Lid
ITB	Intersection Box
TE	45° Elbow Top Lid
IE	45 Elbow Inside Lid
OE	45 Elbow Outside Lid
RE	Reducer
FF	Flared Flange
BE	Blank End
LCS	Lid Clips (Strap and Stud)
FC	Flanged Coupling
CS	Cable Support
CES	Earth Link (Copper) x 10
TCES	Earth Link (Tinned Copper) x 10
CR	Cable Retainer Strap x 10
STL1	Socket Outlet (Single)
STL2	Socket Outlet (Double)
PES	PVC Edging Strip - per metre

STEP 3: Choose size

STEP 4: Compartments

W (mm)	H (mm)	Size Code	No. of compartments possible			
			x1	x2	x3	x4
50	50	22	✓	✓		
75	50	32	✓	✓		
75	75	33	✓	✓		
100	50	42	✓	✓	✓	
100	75	43	✓	✓	✓	
100	100	44	✓	✓	✓	
150	50	62	✓	✓	✓	✓
150	75	63	✓	✓	✓	✓
150	100	64	✓	✓	✓	✓
150	150	66	✓	✓	✓	✓
200	50	82	✓	✓	✓	✓
200	75	83	✓	✓	✓	✓
200	100	84	✓	✓	✓	✓
200	150	86	✓	✓	✓	✓
200	200	88	✓	✓	✓	✓
225	50	92	✓	✓	✓	✓
225	75	93	✓	✓	✓	✓
225	100	94	✓	✓	✓	✓
225	150	96	✓	✓	✓	✓
225	225	99	✓	✓	✓	✓

NB. Specialist Gauges

Gauges conform to latest specifications. For specialist requirements, a range of gauges is available on request.

*One Cover Strap supplied per 3m trunking length to ensure IP4X compliance. Cover Straps are ONLY required on length to length joins.

**Stainless Steel finish trunking products are supplied with standard nuts, bolts and screwfix lid (instead of Unibolts and turnbuckle fastener lid).