

SECTION 01: QUICKFIX TRUNKING SYSTEMS



Discover QuickFix, the innovative trunking range designed by Unitrunk to save you time onsite, thanks to its quick and easy to install design. Installations can be completed up to **6X FASTER** when compared to traditional trunking systems.

The UniBolt's simple, yet effective design, enables cable management system installation times to be reduced by as much as 80%, featuring:




- Universal head
- Bespoke thread
- Serration and domed safety end

QuickFix Trunking Systems are IP4X compliant as standard - no need to order additional components.

Cover straps are only required for length to length joins and are supplied with QuickFix trunking lengths.

QuickFix range is tested in accordance with BS EN 50085.

Available in various materials and finishes:

-  Pre-galvanized structural steel (BS EN 10346)
-  Stainless steel grade 1.4404** (316L marine, BS EN 10088-2)
-  Zinc Magnesium coated steel (BS EN 10346)



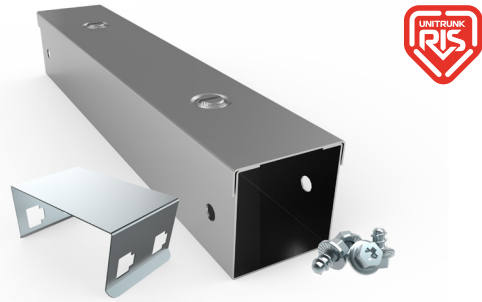
ACCREDITED TO THE FOLLOWING STANDARDS:



QuickFix Trunking

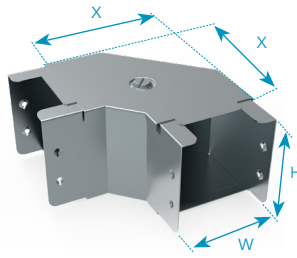
| Part Code | Size (mm) |
|-----------|-----------|
| TK22 | 50 x 50 |
| TK33 | 75 x 75 |
| TK42 | 100 x 50 |
| TK44 | 100 x 100 |
| TK66 | 150 x 150 |

Manufactured from pre-galvanised steel and supplied in 3m lengths. Bespoke sizes available. Each Trunking Length is supplied complete with Cover Strap, Coupler, Lid and Unibolts. Other sizes and finishes are available within our Non-Standard Trunking range, contact your nearest Unitrunk depot for details.



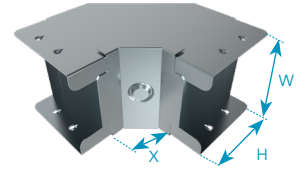
Gusset Bend Top Lid

| Part Code | W (mm) | H (mm) | X (mm) |
|-----------|--------|--------|--------|
| GTB22 | 51 | 51 | 86 |
| GTB33 | 76 | 76 | 111 |
| GTB42 | 102 | 51 | 137 |
| GTB44 | 102 | 102 | 137 |
| GTB66 | 152 | 152 | 187 |



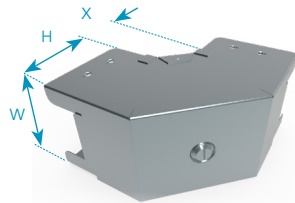
Gusset Bend Inside Lid

| Part Code | W (mm) | H (mm) | X (mm) |
|-----------|--------|--------|--------|
| GIB22 | 51 | 51 | 30 |
| GIB33 | 76 | 76 | 30 |
| GIB42 | 102 | 51 | 30 |
| GIB44 | 102 | 102 | 30 |
| GIB66 | 152 | 152 | 30 |



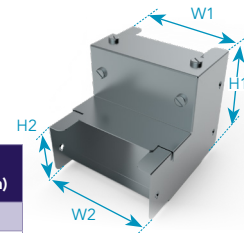
Gusset Bend Outside Lid

| Part Code | W (mm) | H (mm) | X (mm) |
|-----------|--------|--------|--------|
| GOB22 | 51 | 51 | 30 |
| GOB33 | 76 | 76 | 30 |
| GOB42 | 102 | 51 | 30 |
| GOB44 | 102 | 102 | 30 |
| GOB66 | 152 | 152 | 30 |



Reducer

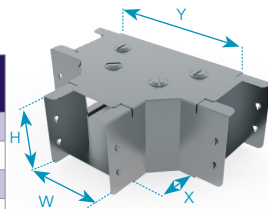
| Part Code | W1 (mm) | H1 (mm) | W2 (mm) | H2 (mm) |
|-----------|---------|---------|---------|---------|
| RE32-22 | 76 | 51 | 51 | 51 |
| RE42-22 | 102 | 51 | 51 | 51 |
| RE44-33 | 102 | 102 | 76 | 76 |
| RE66-44 | 152 | 152 | 102 | 102 |



Other stock sizes available.

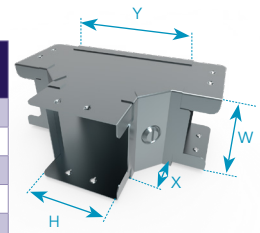
Gusset Tee Top Lid

| Part Code | W (mm) | H (mm) | X (mm) | Y (mm) |
|-----------|--------|--------|--------|--------|
| GTT22 | 51 | 51 | 35 | 121 |
| GTT33 | 76 | 76 | 35 | 146 |
| GTT42 | 102 | 51 | 35 | 172 |
| GTT44 | 102 | 102 | 35 | 172 |
| GTT66 | 152 | 152 | 35 | 222 |



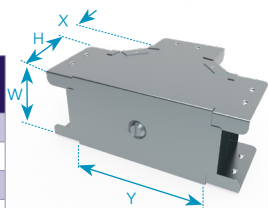
Gusset Tee Inside Lid

| Part Code | W (mm) | H (mm) | X (mm) | Y (mm) |
|-----------|--------|--------|--------|--------|
| GIT22 | 51 | 51 | 30 | 111 |
| GIT33 | 76 | 76 | 30 | 136 |
| GIT42 | 102 | 51 | 30 | 111 |
| GIT44 | 102 | 102 | 30 | 162 |
| GIT66 | 152 | 152 | 30 | 212 |



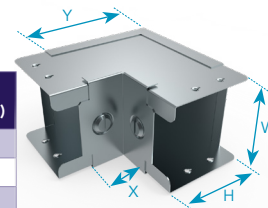
Gusset Tee Outside Lid

| Part Code | W (mm) | H (mm) | X (mm) | Y (mm) |
|-----------|--------|--------|--------|--------|
| GOT22 | 51 | 51 | 30 | 111 |
| GOT33 | 76 | 76 | 30 | 136 |
| GOT42 | 102 | 51 | 30 | 111 |
| GOT44 | 102 | 102 | 30 | 162 |
| GOT66 | 152 | 152 | 30 | 212 |



Sharp Elbow Inside Lid

| Part Code | W (mm) | H (mm) | X (mm) | Y (mm) |
|-----------|--------|--------|--------|--------|
| SIE22 | 51 | 51 | 30 | 81 |
| SIE33 | 76 | 76 | 30 | 106 |
| SIE42 | 102 | 51 | 30 | 81 |
| SIE44 | 102 | 102 | 30 | 132 |
| SIE66 | 152 | 152 | 30 | 182 |



QuickFix Multi Compartment Trunking

Lighting Trunking

Uniklip Cable Tray

Speedway Cable Ladder Pre-Galv. Cable Ladder

Cable Basket Systems

Channel & Support

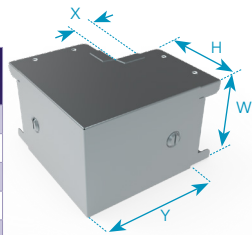
Accessories & Supports

Index

QUICKFIX TRUNKING SYSTEMS

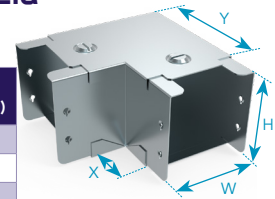
Sharp Elbow Outside Lid

| Part Code | W | H | X | Y |
|-----------|-----|-----|----|-----|
| SOE22 | 51 | 51 | 30 | 81 |
| SOE33 | 76 | 76 | 30 | 106 |
| SOE42 | 102 | 51 | 30 | 81 |
| SOE44 | 102 | 102 | 30 | 136 |
| SOE66 | 152 | 152 | 30 | 182 |



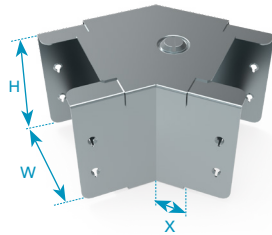
Sharp Elbow Top Lid

| Part Code | W (mm) | H (mm) | X (mm) | Y (mm) |
|-----------|--------|--------|--------|--------|
| STE22 | 51 | 51 | 30 | 81 |
| STE33 | 76 | 76 | 30 | 106 |
| STE42 | 102 | 51 | 30 | 132 |
| STE44 | 102 | 102 | 30 | 132 |
| STE66 | 152 | 152 | 30 | 182 |



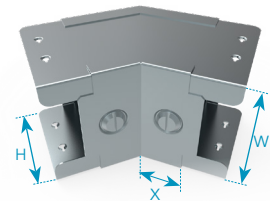
45° Elbow Top Lid

| Part Code | W (mm) | H (mm) | X (mm) |
|-----------|--------|--------|--------|
| TE22 | 51 | 51 | 18 |
| TE33 | 76 | 76 | 18 |
| TE42 | 102 | 51 | 18 |
| TE44 | 102 | 102 | 18 |
| TE66 | 152 | 152 | 18 |



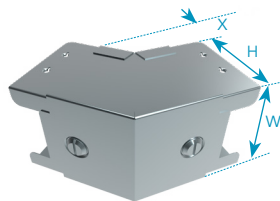
45° Elbow Inside Lid

| Part Code | W (mm) | H (mm) | X (mm) |
|-----------|--------|--------|--------|
| IE22 | 51 | 51 | 29 |
| IE33 | 76 | 76 | 29 |
| IE42 | 102 | 51 | 29 |
| IE44 | 102 | 102 | 29 |
| IE66 | 152 | 152 | 29 |



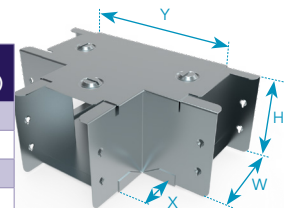
45° Elbow Outside Lid

| Part Code | W (mm) | H (mm) | X (mm) |
|-----------|--------|--------|--------|
| OE22 | 51 | 51 | 25 |
| OE33 | 76 | 76 | 25 |
| OE42 | 102 | 51 | 25 |
| OE44 | 102 | 102 | 25 |
| OE66 | 152 | 152 | 25 |



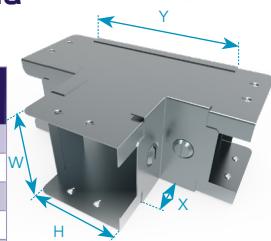
Sharp Tee Top Lid

| Part Code | W (mm) | H (mm) | X (mm) | Y (mm) |
|-----------|--------|--------|--------|--------|
| STT22 | 51 | 51 | 30 | 111 |
| STT33 | 76 | 76 | 30 | 136 |
| STT42 | 102 | 51 | 30 | 111 |
| STT44 | 102 | 102 | 30 | 162 |
| STT66 | 152 | 152 | 30 | 212 |



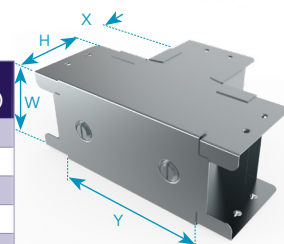
Sharp Tee Inside Lid

| Part Code | W (mm) | H (mm) | X (mm) | Y (mm) |
|-----------|--------|--------|--------|--------|
| SIT22 | 51 | 51 | 30 | 111 |
| SIT33 | 76 | 76 | 30 | 136 |
| SIT42 | 102 | 51 | 30 | 111 |
| SIT44 | 102 | 102 | 30 | 162 |
| SIT66 | 152 | 152 | 30 | 212 |



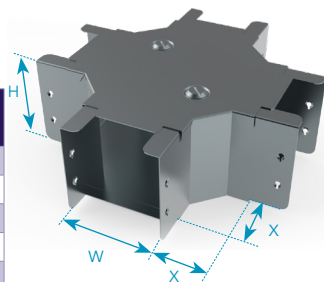
Sharp Tee Outside Lid

| Part Code | W (mm) | H (mm) | X (mm) | Y (mm) |
|-----------|--------|--------|--------|--------|
| SOT22 | 51 | 51 | 30 | 111 |
| SOT33 | 76 | 76 | 30 | 136 |
| SOT42 | 102 | 51 | 30 | 111 |
| SOT44 | 102 | 102 | 30 | 162 |
| SOT66 | 152 | 152 | 30 | 212 |



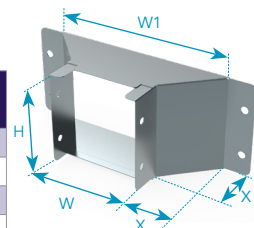
Intersection Box

| Part Code | W (mm) | H (mm) | X (mm) |
|-----------|--------|--------|--------|
| ITB22 | 51 | 51 | 35 |
| ITB33 | 76 | 76 | 35 |
| ITB42 | 102 | 51 | 35 |
| ITB44 | 102 | 102 | 35 |
| ITB66 | 152 | 152 | 35 |

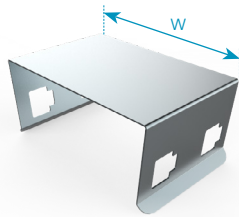


Flared Flange

| Part Code | W (mm) | W1 (mm) | H (mm) | X (mm) |
|-----------|--------|---------|--------|--------|
| FF22 | 51 | 152 | 51 | 51 |
| FF33 | 76 | 178 | 76 | 51 |
| FF42 | 102 | 203 | 51 | 51 |
| FF44 | 102 | 203 | 102 | 51 |
| FF66 | 152 | 254 | 152 | 51 |



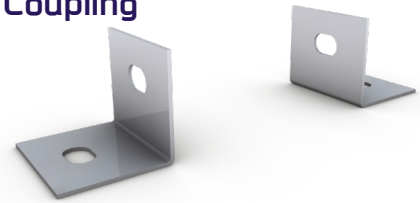
Cover Strap



| Part Code | W (mm) |
|-----------|--------|
| TS2 | 51 |
| TS3 | 77 |
| TS4 | 102 |
| TS6 | 152 |

One Cover Strap is supplied per 3m length, to facilitate length to length assembly.

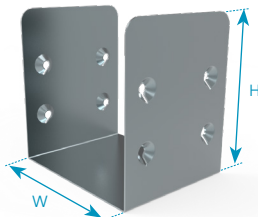
Flanged Coupling



| Part Code |
|-----------|
| FC22 |
| FC33 |
| FC44 |
| FC66 |

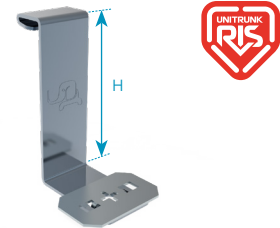
Sold in Pairs. Refer to the Trunking sidewall when ordering. (eg. for TK42 use FC22)

Trunking Coupler



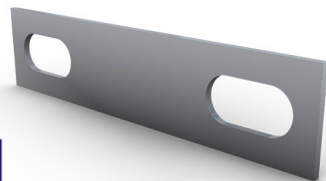
| Part Code | W (mm) | H (mm) |
|-----------|--------|--------|
| TC22 | 50 | 50 |
| TC33 | 75 | 75 |
| TC42 | 101 | 50 |
| TC44 | 101 | 101 |
| TC66 | 151 | 151 |

Trunking to Channel Bracket



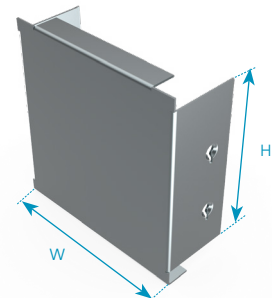
| Part Code | H (mm) |
|-----------|--------|
| TKHDB2 | 50 |
| TKHDB3 | 75 |
| TKHDB4 | 100 |
| TKHDB6 | 150 |

Earth Link



| Part Code | Description |
|-----------|---------------|
| CES | Plain Copper |
| TCES | Tinner Copper |

Blank End



| Part Code | W (mm) | H (mm) |
|-----------|--------|--------|
| BE22 | 51 | 51 |
| BE33 | 76 | 76 |
| BE42 | 102 | 51 |
| BE44 | 102 | 102 |
| BE66 | 152 | 152 |

QuickFix Multi Compartment Trunking

Lighting Trunking

Uniklip Cable Tray

Speedway Cable Ladder Pre-Galv. Cable Ladder

Cable Basket Systems

Channel & Support

Accessories & Supports

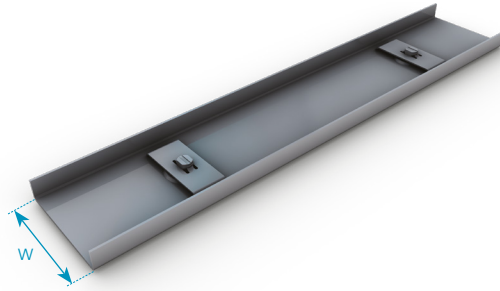
Index

QUICKFIX TRUNKING SYSTEMS

Galvanised Steel Lid

| Part Code | W (mm) |
|-----------|--------|
| GSL2 | 50 |
| GSL3 | 75 |
| GSL4 | 100 |
| GSL6 | 150 |
| GSL8 | 200 |
| GSL9 | 225 |
| GSL12 | 300 |

Supplied in 3m lengths.



T Tool



Part Code

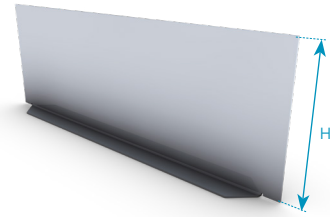
T-Tool

Sold individually. Used to create the form if the end user needs to install (a stud and toggle) lid fixing point onsite.

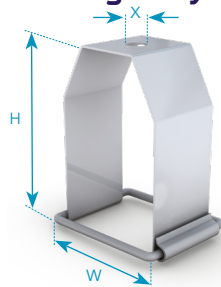
Dividing Fillets

| Part Code | H (mm) |
|-----------|--------|
| DF2 | 50 |
| DF3 | 75 |
| DF4 | 100 |
| DF6 | 150 |

Supplied in 3m lengths.



Hanger Bracket (with Swing Bar) Size 50mm x 50mm

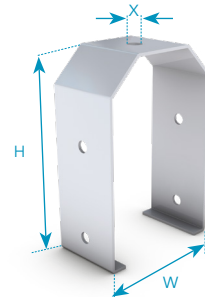


| Part Code | W (mm) | H (mm) | X (mm) |
|------------|--------|--------|----------|
| HBL22SP(X) | 60 | 90 | 10 or 20 |

Hanger Bracket

| Part Code | W (mm) | H (mm) | X (mm) |
|-----------|--------|--------|----------|
| HBL22(X) | 62 | 108 | 10 or 20 |
| HBL33(X) | 85 | 135 | 10 or 20 |
| HBL44(X) | 111 | 175 | 10 or 20 |
| HBL66(X) | 162 | 240 | 10 or 20 |

Other sizes available on request.



Lid Fastener

| Part Code | Size (mm) |
|-----------|-----------|
| LCS2 | 50 |
| LCS3 | 75 |
| LCS4 | 100 |

Available to suit 50mm, 75mm or 100mm widths.
For sizes over 100mm use LCS2 x2.



UniBolt

Part Code

UNIBOLT4

Supplied in pack of 4.



STEP 1: Choose finish



ZINC MAGNESIUM



PRE-GALVANISED



STAINLESS STEEL

**

STEP 2: Choose product

STEP 3: Choose size

STEP 4: Compartments

| Part Code | Product Name |
|-----------|-------------------------------------------|
| TK | Trunking (3m lengths)* |
| TS | Cover Strap (Width only) |
| TKHDB | Trunking to Channel Bracket (Height only) |
| GSL | Galvanised Steel Lid (Width only) |
| TC | Trunking Coupling |
| DF | Dividing Fillet - Loose (Height only) |
| GTB | Gusset Bend Top Lid |
| GIB | Gusset Bend Inside Lid |
| GOB | Gusset Bend Outside Lid |
| STE | Sharp Elbow Top Lid |
| SIE | Sharp Elbow Inside Lid |
| SOE | Sharp Elbow Outside Lid |
| GTT | Gusset Tee Top Lid |
| GIT | Gusset Tee Inside Lid |
| GOT | Gusset Tee Outside Lid |
| STT | Sharp Tee Top Lid |
| SIT | Sharp Tee Inside Lid |
| SOT | Sharp Tee Outside Lid |
| ITB | Intersection Box |
| TE | 45° Elbow Top Lid |
| IE | 45 Elbow Inside Lid |
| OE | 45 Elbow Outside Lid |
| RE | Reducer |
| FF | Flared Flange |
| BE | Blank End |
| LCS | Lid Clips (Strap and Stud) |
| FC | Flanged Coupling |
| CES | Earth Link (Copper) x 10 |
| TCES | Earth Link (Tinned Copper) x 10 |
| PES | PVC Edging Strip - per metre |

| W (mm) | H (mm) | Size Code | No. of compartments possible | | | |
|--------|--------|-----------|------------------------------|----|----|----|
| | | | x1 | x2 | x3 | x4 |
| 50 | 50 | 22 | ✓ | ✓ | | |
| 75 | 50 | 32 | ✓ | ✓ | | |
| 75 | 75 | 33 | ✓ | ✓ | | |
| 100 | 50 | 42 | ✓ | ✓ | ✓ | |
| 100 | 75 | 43 | ✓ | ✓ | ✓ | |
| 100 | 100 | 44 | ✓ | ✓ | ✓ | |
| 150 | 50 | 62 | ✓ | ✓ | ✓ | ✓ |
| 150 | 75 | 63 | ✓ | ✓ | ✓ | ✓ |
| 150 | 100 | 64 | ✓ | ✓ | ✓ | ✓ |
| 150 | 150 | 66 | ✓ | ✓ | ✓ | ✓ |
| 200 | 50 | 82 | ✓ | ✓ | ✓ | ✓ |
| 200 | 75 | 83 | ✓ | ✓ | ✓ | ✓ |
| 200 | 100 | 84 | ✓ | ✓ | ✓ | ✓ |
| 200 | 150 | 86 | ✓ | ✓ | ✓ | ✓ |
| 200 | 200 | 88 | ✓ | ✓ | ✓ | ✓ |
| 225 | 50 | 92 | ✓ | ✓ | ✓ | ✓ |
| 225 | 75 | 93 | ✓ | ✓ | ✓ | ✓ |
| 225 | 100 | 94 | ✓ | ✓ | ✓ | ✓ |
| 225 | 150 | 96 | ✓ | ✓ | ✓ | ✓ |
| 225 | 225 | 99 | ✓ | ✓ | ✓ | ✓ |

STEP 5: Gauge

Gauges conform to latest specifications. For specialist requirements, a range of gauges is available on request.

*Trunking lengths are supplied with Cover Straps to ensure IP4X compliance. Cover Straps are ONLY required on length to length joins.

**Stainless Steel finish trunking products are supplied with standard nuts, bolts and screwfix lid (instead of UniBolts and turnbuckle fastener lid).

QuickFix Multi Compartment Trunking

Lighting Trunking

Uniklip Cable Tray

Speedway Cable Ladder Pre-Galv. Cable Ladder

Cable Basket Systems

Channel & Support

Accessories & Supports

Index