

# CABLE TRAY SYSTEMS

## Heavy Duty Cable Tray

(in accordance with BS 61537)

Part Code	Tray Width (mm)
HR50T	50
HR75T	75
HR100T	100
HR150T	150
HR225T	225
HR300T	300
HR450T	450
HR600T	600
HR750T	750
HR900T	900

GX

SS

GA

PG

CP

Available across this size range

750-900 only



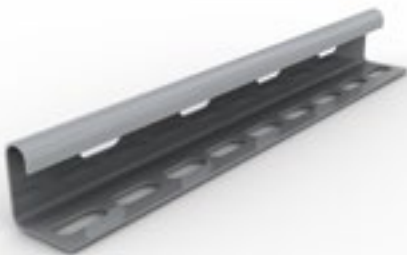
If you require 50 - 600 in 

PG

CP

 please refer to the **UNIKLIP** Cable Tray section on page 42

### Straight Coupler



Part Code	Length (mm)
HR/SC	225

Sold in pairs.

### Tray Divider



Part Code	Length (mm)
HR/DF	3000

### Fish Plate



Part Code	Width (mm)
P 100-900mm	Width dimension less 52

### Cranked Coupler



Part Code	
HR/CC	Sold in pairs.

### Tray to Channel Klip



Part Code	
CHTR 50	Sold individually.