

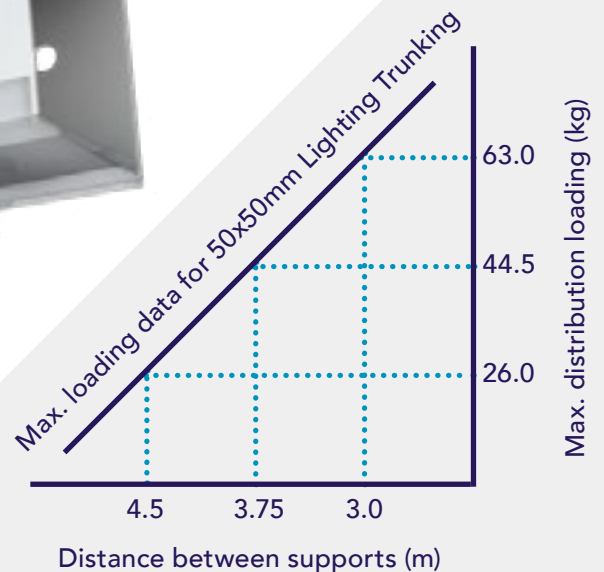
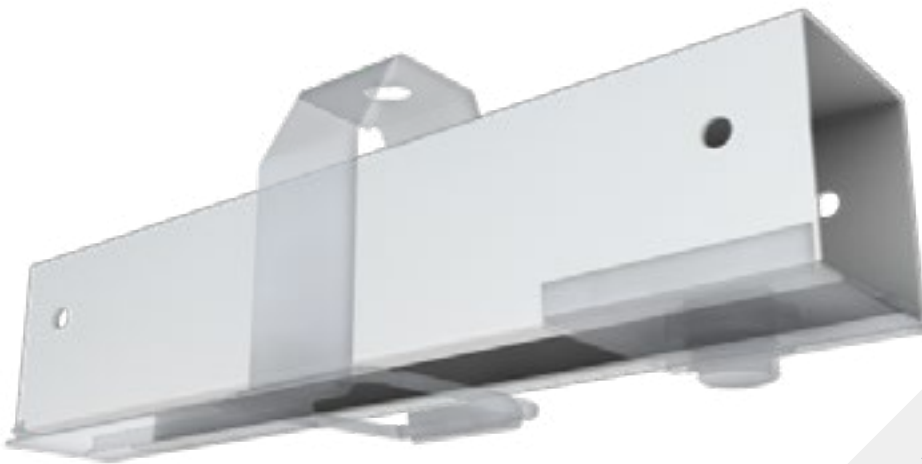


# UNITRUNK

## SECTION 03: LIGHTING TRUNKING SYSTEMS

Unitrunk Lighting Trunking is manufactured from galvanised sheet steel to BS EN 10346:2015.

QuickFix Cable Trunking fittings can be used with Unitrunk's Lighting Trunking and Accessories Range, enabling the two types to be easily interconnected in order to simplify installation and wiring.



ACCREDITED TO THE FOLLOWING STANDARDS:



Lighting Trunking

Part Code	Size (mm)	Length (m)
LT223	50 x 50	3
LT223.5	50 x 50	3.5
LT224.5	50 x 50	4.5
LT226	50 x 50	6

Other sizes available on request.



Long Coupler



Part Code	Size (mm)
LCL22	50 x 50
LCL33	75 x 75

Fitting Suspension



Part Code	Size (mm)	X	Y
FSL22	50 x 50	62	55
FSL33	75 x 75	82	85

With Brass Bush and Steel Lock Nuts.

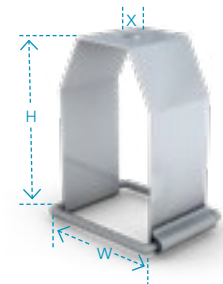
Hanger Bracket



Part Code	W	H	X
HBL22(X)	85	55	10 or 20
HBL33(X)	135	85	10 or 20
HBL44(X)	165	115	10 or 20
HBL66(X)	245	165	10 or 20

Other sizes available on request.

Hanger Bracket (with Swing Bar)  
Size 50mm x 50mm



Part Code	W	H	X
HBL22SP(X)	55	85	10 or 20

Galvanised Snap-In Lid



Part Code	Size (mm)
GCL2	50 x 50

Supplied in 2m lengths.

Galvanised Steel Lid



Part Code	Size (mm)
GSL2	50
GSL3	75

Supplied in 3m lengths.

QuickFix Trunking

QuickFix Multi Compartment Trunking

Lighting Trunking

Uniklip

Cable Tray

Speedway Cable Ladder Pre-Galv. Cable Ladder

Cable Basket Systems

Channel & Support

Floor Trunking

Bench Outlet & Perimeter Trunking

Steel Conduit (Class 4)

Innovative Design Solutions

Accessories & Supports

Index