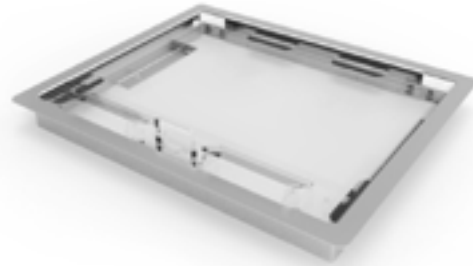


## Floor Box - Metal Trim



**Part Code**

This metal trim is available in Polyester Powder Coated or Stainless Steel finish for installation into standard inspection and service outlets, across all floor system ranges.

Special

Available with 7mm, 9mm, 15mm, 20mm & 25mm tile recess.

## Cavity Floor Access Hatch



**Part Code**

This bespoke hatch, fitted at finished floor level, allows access to services within a cavity floor system. Cutouts to allow cables can be supplied to your specification.

CAVHATCH

## Shallow Flush Floor



**Part Code**

Shallow flush floor trunking is designed for a minimal screed application. It is also available for wooden floors where the same principle applies. Width and height to customer specification.

SSF

## Flush Floor Trunking Recessed Lid



**Part Code**

The trunking body and tray type cover are formed from galvanised sheet steel. The standard depth of the cover is 8mm but deeper sections for wood block flooring etc. are available. Dividing fillets are fitted to 150mm and wider in order to support cover.

FFR

When ordering multi-compartment floor trunking the width of each compartment should be specified. Alternative sizes available to order.

## Flush Floor Trunking Chequer Plate Lid



**Part Code**

A self adhesive gasket is fitted under the chequer plate lid which can be supplied galvanised or in grey enamel finish, also available with chequer plate lid.

FFC

When ordering multi-compartment floor trunking, the width of each compartment should be specified. Alternative sizes available to order.