

EASY-WAY FLUSH FLOOR TRUNKING SYSTEMS

Easy-Way Flush Floor Trunking

Supplied in two standard widths, 310mm wide or 366mm wide. Each 2.4m length comes with four lids to accommodate service outlets. Turnbuckle lid fixings and removable dividers offer the end user greater flexibility when positioning services.

Easy-Way Service Outlet

Installed in the trunking length, functioning as the support housing adapter for either service outlet lids or inspection lids.

Floor System Outlet Lids

Accessed from finished floor. These lids are compatible across all floor systems trunking supplied as either service or inspection. Lids are supplied in two widths which should be ordered to match your application.

Service Outlet Plates

The vast range of service outlet plates act as a housing within the trunking for electrical components. They are compatible across all floor systems trunking. When ordering ensure the outlet plates match your application. (See pages 117 - 118 for outlet plates)

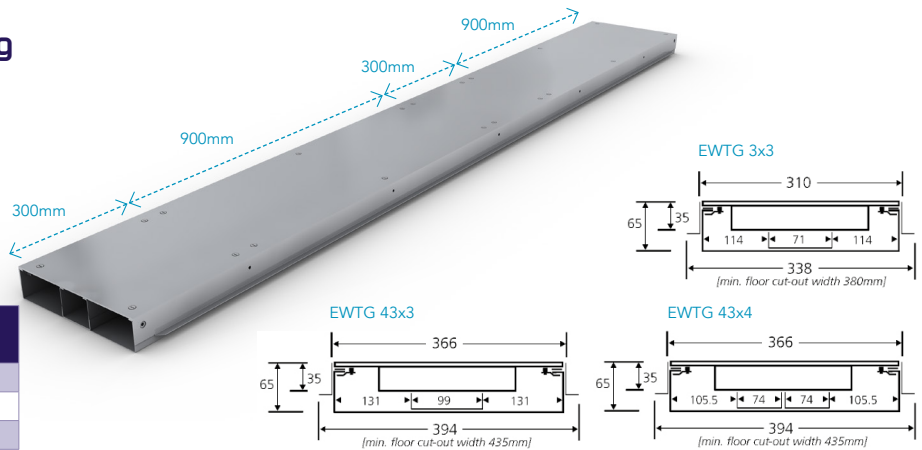
- 1 Lift off 300mm length of lid
- 2 Take out 300mm length of high-level divider
- 3 Fit service outlet box
- 4 Fit outlet panels as required
- 5 Fit metal lid with polypropylene carpet trim
- 6 Supplied in 2.4m lengths

Height Adjustable Coupling (18mm max.)
 376mm (for EWTG 3)
 432mm (for EWTG43)

Part Code	Service Outlet	Service Outlet Panels	Lid
EWTG3X3	EWS03	EW755, EW756, EW759, EW763, EW764, EW767	CTI3 (Inspection lid) CTS3 (Service lid)
EWTG43X3	EWS043	EW103, EW105, EW106, EW109, EW113, EW114, EW125	CTI43 (Inspection lid) CTS43 (Service lid)
EWTG43X4		EW755, EW756, EW759, EW763, EW764, EW767	CTI43 (Inspection lid) CTS43 (Service lid)



Easy-Way Trunking



Part Code	Description
EWTG3x3	310mm - 3 compartment
EWTG43x3	366mm - 3 compartment
EWTG43x4	366mm - 4 compartment

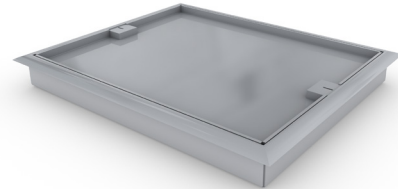
Service Outlet Lid



Part Code	Description
CT/S3	for use with EWSO3
CT/S43	for use with EWSO43

Supplied with a 7mm recess & PVC Trim as standard. Stainless Steel Trim & deeper recesses (9mm, 15mm, 20mm, 25mm) are available to order.

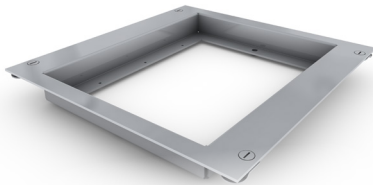
Inspection Lid



Part Code	Description
CT/I3	for use with EWSO3
CT/I43	for use with EWSO43

Supplied with a 7mm recess & PVC Trim as standard. Stainless Steel Trim & deeper recesses (9mm, 15mm, 20mm, 25mm) are available to order.

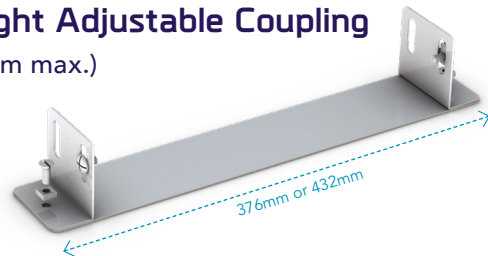
Service Outlet Frame



Part Code	Description
EWSO3	310mm - 3 compartment
EWSO43	366mm - 3 or 4 compartment

When ordering PVC Trim: SERVICE Ref: CT/S 3 or CT/S 43 INSPECTION Ref: CT/I 3 or CT/I 43

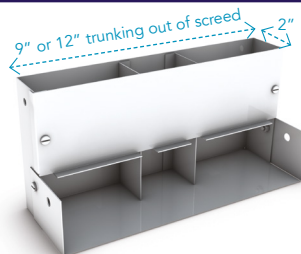
Height Adjustable Coupling (18mm max.)



Part Code	Description
EWTC3	376mm
EWTC43	432mm

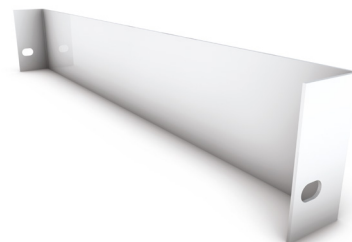
Supplied in singles.

Riser Bend



Part Code	Description
EWRB3	3 compartment
EWRB43x3	3 compartment
EWRB43x4	4 compartment

Blank End



Part Code
EWBE3
EWBE43