



**UNITRUNK**

# SECTION 11: INNOVATIVE DESIGN SOLUTIONS

Our industry experience over many years has secured our position as the leader in bespoke made to order cable management solutions.

The products profiled in this section are unique to Unitrunk. They have been designed by our Innovation Department who work closely with our customers to overcome any challenges, providing the ideal solution to their needs.

If your project requires a bespoke solution, please get in touch with your nearest Unitrunk location. We will be happy to help.



ACCREDITED TO THE FOLLOWING STANDARDS:



### Change of Face Trunking 90° Angle

Used in situations where a trunking lid changes face, e.g. top lid to front lid.

No more cutting trunking on-site, reducing on-site fabrication (hot works) and saving on installation time.

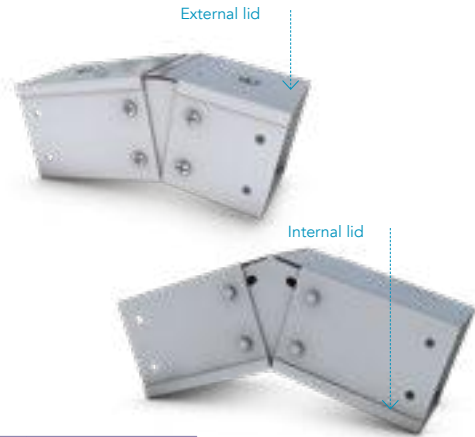


Part Code
COF

### Adjustable Bends (Vertical) 0-35° Angle

Provides flexibility on-site to manage any unforeseen situations where angles cannot be determined before installation.

Can be formed as an internal or external joint.  
Code eg: VAB22 (Adjustable Bend 50x50mm)



Part Code	Description
VAB/Size	External Lid
BAB/Size	Internal Lid

### Adjustable Bends (Horizontal) 0-35° Angle

Provides flexibility on-site to manage any unforeseen situations where angles cannot be determined before installation.



Part Code
HAB

### Double Depth Tee

Manufactured to enter at bottom or lid level.  
Provides full compartmental depth from trunking to Tee underpass.



Part Code
DDT

QuickFix Trunking

QuickFix Multi Compartment Trunking

Lighting Trunking

Uniklip Cable Tray

Speedway Cable Ladder Pre-Galv. Cable Ladder

Cable Basket Systems

Channel & Support

Floor Trunking

Bench Outlet & Perimeter Trunking

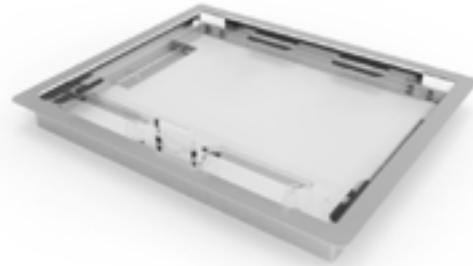
Steel Conduit (Class 4)

Innovative Design Solutions

Accessories & Supports

Index

## Floor Box - Metal Trim



**Part Code**

This metal trim is available in Polyester Powder Coated or Stainless Steel finish for installation into standard inspection and service outlets, across all floor system ranges.

**Special**

Available with 7mm, 9mm, 15mm, 20mm & 25mm tile recess.

## Cavity Floor Access Hatch



**Part Code**

This bespoke hatch, fitted at finished floor level, allows access to services within a cavity floor system. Cutouts to allow cables can be supplied to your specification.

**CAVHATCH**

## Shallow Flush Floor



**Part Code**

Shallow flush floor trunking is designed for a minimal screed application. It is also available for wooden floors where the same principle applies. Width and height to customer specification.

**SSF**

## Flush Floor Trunking Recessed Lid



**Part Code**

The trunking body and tray type cover are formed from galvanised sheet steel. The standard depth of the cover is 8mm but deeper sections for wood block flooring etc. are available. Dividing fillets are fitted to 150mm and wider in order to support cover.

**FFR**

When ordering multi-compartment floor trunking the width of each compartment should be specified. Alternative sizes available to order.

## Flush Floor Trunking Chequer Plate Lid



**Part Code**

A self adhesive gasket is fitted under the chequer plate lid which can be supplied galvanised or in grey enamel finish, also available with chequer plate lid.

**FFC**

When ordering multi-compartment floor trunking, the width of each compartment should be specified. Alternative sizes available to order.

### Industrial Floor Box

3 compartment floor box is available in 100mm deep to suit 15mm floor tile. The box has chain link fixing for lid. 2000kg load.

Part Code

Special

Please contact Unitrunk's technical department for bespoke configuration.



### Weatherproof Trunking

The IP65 trunking is constructed with outwardly turned flanges and provided with an internal sleeve coupling which allows it to be cut as necessary on-site.

Bonded gaskets are fitted throughout. The flange covers are secured by bolts and both the trunking and cover are manufactured from hot-dip galvanised sheet steel to either BS EN 10346 or BS 1461.

A complete range of weatherproof trunking fittings is available on request.

Part Code

WPTK



### Flexible Bend Trunking

Ease of installation, perfect for navigating challenging areas whilst maintaining the installation's symmetric appearance. Manufactured to customer requirements.

Part Code

Special



### Screw Fixed Lid Trunking

Available with a complete range of fittings and supplied in various finishes i.e. galvanised steel, stainless steel and epoxy/polyester coated. Also available with tamper proof Lid fixings.

Code eg: SFL/TK/22/TORQ  
Screwfix Lid/Trunking/50x50mm/Torq Screw.

Part Code

SFL/TK/SIZE/SCREW TYPE



Standard (Slot)

Security Screws:

Torq (Resistor)

Snake Eye

Socket Button Head

### Cable Guard

Available in all sizes and finishes to customer requirements. Manufactured to any length up to 3m.

Part Code

CG



### Dado Anti-Ligature

Often installed in custodial environments, supplied with security fixings with a special design to eliminate ligature points. Manufactured to customer requirements.

Part Code

Special



### Power Posts

Provides services from floor voids to desk height work stations. Size manufactured to customer requirements.

Part Code

PP



QuickFix Trunking

QuickFix Multi Compartment Trunking

Lighting Trunking

Uniklip Cable Tray

Speedway Cable Ladder Pre-Galv. Cable Ladder

Cable Basket Systems

Channel & Support

Floor Trunking

Bench Outlet & Perimeter Trunking

Steel Conduit (Class 4)

Innovative Design Solutions

Accessories & Supports

Index