

SECTION 01: QUICKFIX TRUNKING SYSTEMS



Introducing QuickFix, the innovative trunking range designed by Unitrunk to save you time onsite, thanks to its quick and easy to install design. Installations can be completed up to **6X FASTER** when compared to traditional trunking systems.

The UniBolt's simple, yet effective design, enables cable management system installation times to be reduced by as much as 80%, featuring:

- Universal head
- Bespoke thread
- Serration and domed safety end

QuickFix Trunking Systems are IP4X compliant as standard - no need to order additional components.

Cover straps are only required for Length to Length joins and are supplied with QuickFix trunking lengths.

QuickFix Trunking range includes sizes up to and including TK99. For trunking sizes greater than TK99, alternative lid options, and/or multiple material configurations, please contact your local Unitrunk branch for details.



ACCREDITED TO THE FOLLOWING STANDARDS:



QuickFix Trunking

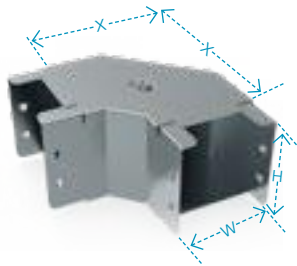
Part Code	Size (mm)
TK22	50 x 50
TK33	75 x 75
TK42	100 x 50
TK44	100 x 100
TK66	150 x 150

Manufactured from pre-galvanised steel and supplied in 3m lengths. Bespoke sizes available. Each Trunking Length is supplied complete with Cover Strap, Coupler, Lid and Unibolts. Other sizes and finishes are available within our Non-Standard Trunking range, contact your nearest Unitrunk depot for details.



Gusset Bend Top Lid

Part Code	W	H	X
GTB22	50	50	91
GTB33	75	75	115
GTB42	100	50	140
GTB44	100	100	140
GTB66	150	150	193



Gusset Bend Inside Lid

Part Code	W	H	X
GIB22	50	50	25
GIB33	75	75	25
GIB42	100	50	25
GIB44	100	100	25
GIB66	150	150	25



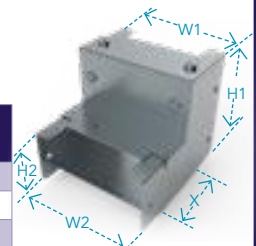
Gusset Bend Outside Lid

Part Code	W	H	X
GOB22	50	50	25
GOB33	75	75	25
GOB42	100	50	25
GOB44	100	100	25
GOB66	150	150	25



Reducer

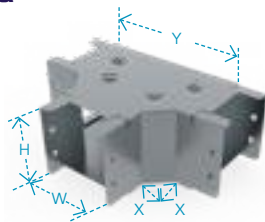
Part Code	W1	H1	W2	H2	X
RE32-22	75	75	50	50	60
RE42-22	100	50	50	50	60
RE44-33	100	100	75	75	60
RE66-44	150	150	100	100	60



Other stock sizes available.

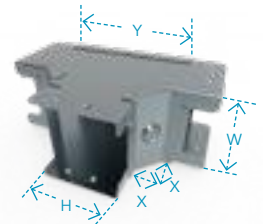
Gusset Tee Top Lid

Part Code	W	H	X	Y
GTT22	50	50	25	129
GTT33	75	75	25	154
GTT42	100	50	25	180
GTT44	100	100	25	180
GTT66	150	150	25	230



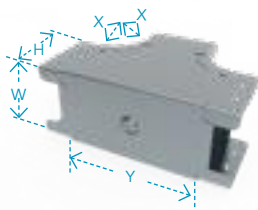
Gusset Tee Inside Lid

Part Code	W	H	X	Y
GIT22	50	50	25	115
GIT33	75	75	25	140
GIT42	100	50	25	115
GIT44	100	100	25	165
GIT66	150	150	25	215



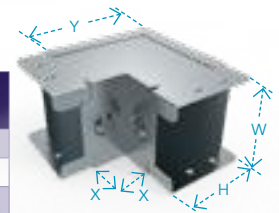
Gusset Tee Outside Lid

Part Code	W	H	X	Y
GOT22	50	50	25	115
GOT33	75	75	25	140
GOT42	100	50	25	115
GOT44	100	100	25	165
GOT66	150	150	25	215



Sharp Elbow Inside Lid

Part Code	W	H	X	Y
SIE22	50	50	30	85
SIE33	75	75	30	110
SIE42	100	50	30	85
SIE44	100	100	30	135
SIE66	150	150	30	187



QuickFix Multi Compartment Trunking

Lighting Trunking

Uniklip Cable Tray

Speedway Cable Ladder Pre-Galv. Cable Ladder

Cable Basket Systems

Channel & Support

Floor Trunking

Bench Outlet & Perimeter Trunking

Steel Conduit (Class 4)

Innovative Design Solutions

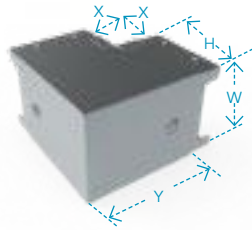
Accessories & Supports

Index

QUICKFIX TRUNKING SYSTEMS

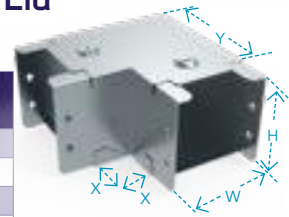
Sharp Elbow Outside Lid

Part Code	W	H	X	Y
SOE22	50	50	30	85
SOE33	75	75	30	110
SOE42	100	50	30	85
SOE44	100	100	30	135
SOE66	150	150	30	187



Sharp Elbow Top Lid

Part Code	W	H	X	Y
STE22	50	50	30	85
STE33	75	75	30	110
STE42	100	50	30	130
STE44	100	100	30	130
STE66	150	150	30	185



45° Elbow Top Lid

Part Code	W	H	X	Y
TE22	50	50	20	43
TE33	75	75	20	53
TE42	100	50	20	63
TE44	100	100	20	63
TE66	150	150	20	83



45° Elbow Inside Lid

Part Code	W	H	X	Y
IE22	50	50	30	53
IE33	75	75	30	63
IE42	100	50	30	53
IE44	100	100	30	83
IE66	150	150	30	103



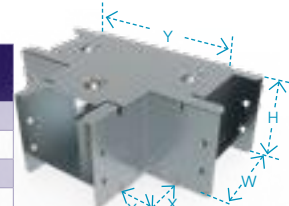
45° Elbow Outside Lid

Part Code	W	H	X	Y
OE22	50	50	53	30
OE33	75	75	63	30
OE42	100	50	53	30
OE44	100	100	83	30
OE66	150	150	103	30



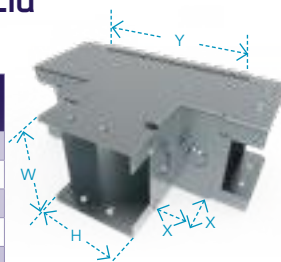
Sharp Tee Top Lid

Part Code	W	H	X	Y
STT22	50	50	30	115
STT33	75	75	30	140
STT42	100	50	30	165
STT44	100	100	30	165
STT66	150	150	30	215



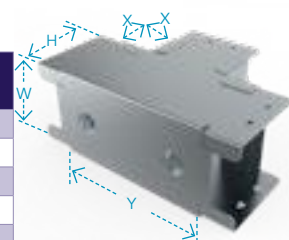
Sharp Tee Inside Lid

Part Code	W	H	X	Y
SIT22	50	50	30	112
SIT33	75	75	30	137
SIT42	100	50	30	112
SIT44	100	100	30	162
SIT66	150	150	30	212



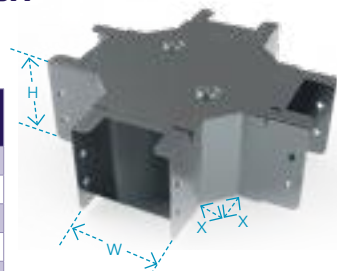
Sharp Tee Outside Lid

Part Code	W	H	X	Y
SOT22	50	50	30	112
SOT33	75	75	30	137
SOT42	100	50	30	112
SOT44	100	100	30	162
SOT66	150	150	30	212



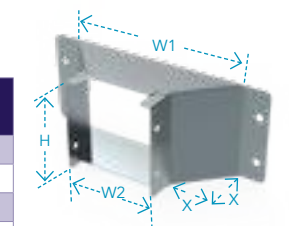
Intersection Box

Part Code	W	H	X
ITB22	50	50	25
ITB33	75	75	25
ITB42	100	50	25
ITB44	100	100	25
ITB66	150	150	25

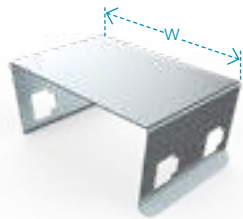


Flared Flange

Part Code	W1	W2	H	X
FF22	145	50	50	50
FF33	175	75	75	50
FF42	200	100	50	50
FF44	200	100	100	50
FF66	250	150	150	50



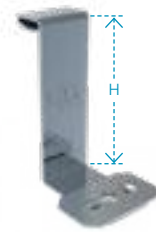
Cover Strap



Part Code	W
TS2	50
TS3	75
TS4	100
TS6	150

One Cover Strap is supplied per 3m length, to facilitate length to length assembly.

Trunking to Channel Bracket



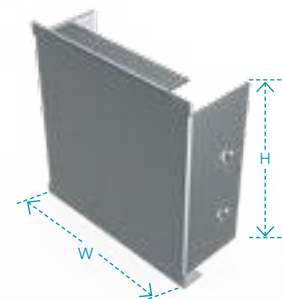
Part Code	H
TKHDB2	50
TKHDB3	75
TKHDB4	100
TKHDB6	150

Trunking Coupler



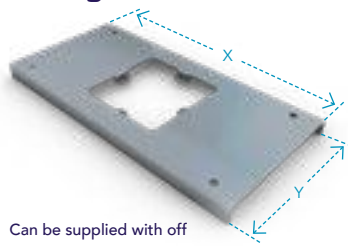
Part Code	W	H
TC22	50	50
TC33	75	75
TC42	100	50
TC44	100	100
TC66	150	150

Blank End



Part Code	W	H
BE22	50	50
BE33	75	75
BE42	100	50
BE44	100	100
BE66	150	150

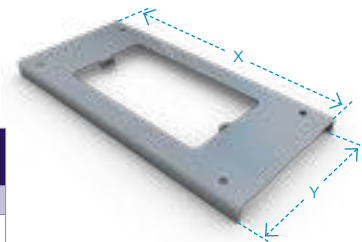
Socket Outlet Single



Part Code	X	Y
STL14	230	110
STL16	230	160

Can be supplied with off centre cutouts.

Socket Outlet Double



Part Code	W	H
STL24	230	110
STL26	230	160

Cable Support



Part Code	W	H
CS22	50	50
CS33	75	75
CS42	100	50
CS44	100	100
CS66	150	150

Earth Link



Part Code	Description
CES	Plain Copper
TCES	Tinner Copper

For trunking sizes greater than TK99, alternative lid options or material finishes, please contact your nearest Unitrunk depot and ask about our Non-Standard Trunking range.

QuickFix Multi Compartment Trunking

Lighting Trunking

Uniklip Cable Tray

Speedway Cable Ladder Pre-Galv. Cable Ladder

Cable Basket Systems

Channel & Support

Floor Trunking

Bench Outlet & Perimeter Trunking

Steel Conduit (Class 4)

Innovative Design Solutions

Accessories & Supports

Index

QUICKFIX TRUNKING SYSTEMS

Galvanised Steel Lid

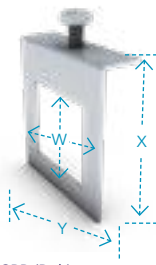
Part Code	W
GSL2	50
GSL3	75
GSL4	100
GSL6	150
GSL8	200
GSL9	225
GSL12	300

Supplied in 3m lengths.



Window Beam Clamp

Size 50mm x 50mm



Part Code	X	Y	W
WBC22	90	103	50

C/W M10 x 40 CPB (Bolt).

Dividing Fillets



Part Code	W
DF2	50
DF3	75
DF4	100
DF6	150

Supplied in 3m lengths.

Metal Retaining Strap



Part Code	W
CR2	50
CR3	75
CR4	100
CR6	150

Flanged Coupling



Part Code
FC22
FC33
FC44
FC66

Sold in Pairs. Refer to the Trunking sidewall when ordering. (eg. for TK42 use FC22)

Plastic Cable Retaining Strap



Part Code	Size (mm)
CR2/3	50 x 75
CR4/6	100 x 150

Hanger Bracket



Part Code	W	H	X
HBL22(X)	85	55	10 or 20
HBL33(X)	135	85	10 or 20
HBL44(X)	165	115	10 or 20
HBL66(X)	245	165	10 or 20

Other sizes available on request.

Hanger Bracket (with Swing Bar)

Size 50mm x 50mm



Part Code	W	H	X
HBL22SP(X)	55	85	10 or 20

Lid Fastener



Part Code	Size (mm)
LCS2	50
LCS3	75
LCS4	100

Available to suit 50mm, 75mm or 100mm widths. For sizes over 100mm use LCS2 x2.

STEP 1: Choose finish



PRE-GALVANISED



POWDER COATED



STAINLESS STEEL

STEP 2: Choose product

STEP 3: Choose size

STEP 4: Compartments

Part Code	Product Name
TK	Trunking (3m lengths)*
TS	Cover Strap (Width only)
TKHDB	Trunking to Channel Bracket (Height only)
GSL	Galvanised Steel Lid (Width only)
TC	Trunking Coupling
DF	Dividing Fillet - Loose (Height only)
GTB	Gusset Bend Top Lid
GIB	Gusset Bend Inside Lid
GOB	Gusset Bend Outside Lid
STE	Sharp Elbow Top Lid
SIE	Sharp Elbow Inside Lid
SOE	Sharp Elbow Outside Lid
GTT	Gusset Tee Top Lid
GIT	Gusset Tee Inside Lid
GOT	Gusset Tee Outside Lid
STT	Sharp Tee Top Lid
SIT	Sharp Tee Inside Lid
SOT	Sharp Tee Outside Lid
ITB	Intersection Box
TE	45° Elbow Top Lid
IE	45 Elbow Inside Lid
OE	45 Elbow Outside Lid
RE	Reducer
FF	Flared Flange
BE	Blank End
LCS	Lid Clips (Strap and Stud)
FC	Flanged Coupling
CS	Cable Support
CES	Earth Link (Copper) x 10
TCES	Earth Link (Tinned Copper) x 10
CR	Cable Retainer Strap x 10
STL1	Socket Outlet (Single)
STL2	Socket Outlet (Double)
PES	PVC Edging Strip - per metre

W (mm)	H (mm)	Size Code	No. of compartments possible			
			x1	x2	x3	x4
50	50	22	✓	✓		
75	50	32	✓	✓		
75	75	33	✓	✓		
100	50	42	✓	✓	✓	
100	75	43	✓	✓	✓	
100	100	44	✓	✓	✓	
150	50	62	✓	✓	✓	✓
150	75	63	✓	✓	✓	✓
150	100	64	✓	✓	✓	✓
150	150	66	✓	✓	✓	✓
200	50	82	✓	✓	✓	✓
200	75	83	✓	✓	✓	✓
200	100	84	✓	✓	✓	✓
200	150	86	✓	✓	✓	✓
200	200	88	✓	✓	✓	✓
225	50	92	✓	✓	✓	✓
225	75	93	✓	✓	✓	✓
225	100	94	✓	✓	✓	✓
225	150	96	✓	✓	✓	✓
225	225	99	✓	✓	✓	✓

STEP 5: Gauge

Gauges conform to latest specifications. For specialist requirements, a range of gauges is available on request.

For trunking sizes greater than TK99, alternative lid options, and/or multiple material configurations, please contact your nearest Unitrunk depot and ask about our Non-Standard Trunking range.

*Trunking lengths are supplied with Cover Straps to ensure IP4X compliance. Cover Straps are ONLY required on length to length joins.

**Stainless Steel finish trunking products are supplied with standard nuts, bolts and screwfix lid (instead of Unibolts and turnbuckle fastener lid).

QuickFix Multi Compartment Trunking

Lighting Trunking

Uniklip Cable Tray

Speedway Cable Ladder Pre-Galv. Cable Ladder

Cable Basket Systems

Channel & Support

Floor Trunking

Bench Outlet & Perimeter Trunking

Steel Conduit (Class 4)

Innovative Design Solutions

Accessories & Supports

Index