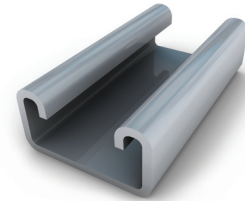
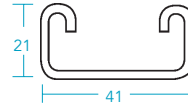


Shallow Channel

Part Code	Length (m)	Finish
UC4121/3	3	Galvanized to BS EN10346
UC4121/6	6	Galvanized to BS EN10346
GMUC4121/3	3	Hot Dipped to BS EN ISO 1461
GMUC4121/6	6	Hot Dipped to BS EN ISO 1461

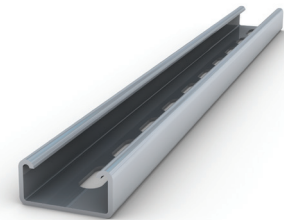
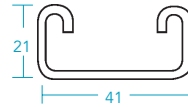


Span (m)	0.50	0.75	1.00	1.50	2.00	2.50	3.00
Deflection at load*mm	1.70	3.90	6.90	15.60	27.70	43.30	62.30
Safe UDL **kg	239	172	128	84	61	47	38

* Including weight of channel.
** Excluding weight of channel.

Slotted Shallow Channel

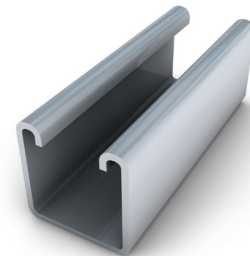
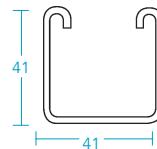
Part Code	Length (m)	Finish
UC4121S/3	3	Galvanized to BS EN10346
UC4121S/6	6	Galvanized to BS EN10346
GMUC4121S/3	3	Hot Dipped to BS EN ISO 1461
GMUC4121S/6	6	Hot Dipped to BS EN ISO 1461



Span (m)	0.50	0.75	1.00	1.50	2.00	2.50	3.00
Deflection at load*mm	1.90	4.30	7.70	17.30	30.70	48.00	69.10
Safe UDL **kg	238	158	118	77	56	44	35

Deep Channel

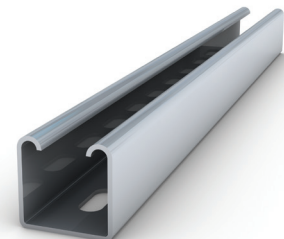
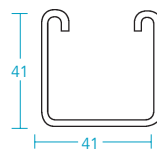
Part Code	Length (m)	Finish
UC4141/3	3	Galvanized to BS EN10346
UC4141/6	6	Galvanized to BS EN10346
GMUC4141/3	3	Hot Dipped to BS EN ISO 1461
GMUC4141/6	6	Hot Dipped to BS EN ISO 1461



Span (m)	0.50	0.75	1.00	1.50	2.00	2.50	3.00
Deflection at load*mm	0.90	2.10	3.70	8.20	14.60	22.80	32.90
Safe UDL **kg	837	557	416	275	204	161	132

Slotted Deep Channel

Part Code	Length (m)	Finish
UC4141S/3	3	Galvanized to BS EN10346
UC4141S/6	6	Galvanized to BS EN10346
GMUC4141S/3	3	Hot Dipped to BS EN ISO 1461
GMUC4141S/6	6	Hot Dipped to BS EN ISO 1461



Span (m)	0.50	0.75	1.00	1.50	2.00	2.50	3.00
Deflection at load*mm	1.00	2.20	4.00	8.90	15.90	24.80	35.70
Safe UDL **kg	776	516	386	255	189	149	122