

# ACCESSORIES & SUPPORTS

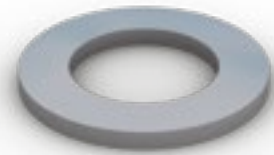
## Wedge Nut



Part Code	Thread Size
M6WN	M6
M8WN	M8
M10WN	M10
M12WN	M12

Sold in packs of 100.

## Flat Washers



Part Code	Thread Size
M6FW	M6
M8FW	M8
M10FW	M10
M12FW	M12

Sold in packs of 100.

## Full Hexagonal Nuts



Part Code	Thread Size
M6HN	M6
M8HN	M8
M10HN	M10
M12HN	M12

## Beam Clamp



Part Code	Thread/Hole Size (mm)
FC6T	M6 Threaded
FC8T	M8 Threaded
FC10T	M10 Threaded
FC11	11mm Plain Hole*
FC13	13mm Plain Hole**

\*Max. girder width for bolting 19mm  
\*\*Max. girder width for bolting 23mm

## Hex Head Set Screws

Part Code	Available Size (mm)						Thread Size
	20	25	30	35	40	50	
M6 x Size HS	20	25	30	35	40	-	M6
M8 x Size HS	20	25	30	35	40	-	M8
M10 x Size HS	20	25	30	35	40	50	M10
M12 x Size HS	20	25	30	35	40	50	M12

Unitrunk stocks a large range of set screws in thread sizes M6, M8, M10 and M12. Popular lengths range from 20mm to 40mm and are stocked at all Unitrunk distribution points. Sold in packs of 100.



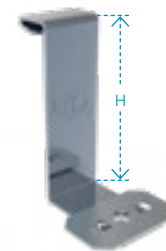
## Mudguard Washers



Part Code	Size
M6MW	M6
M8MW	M8
M10MW	M10
M12MW	M12

Sold in packs of 100.

## Trunking to Channel Bracket



Part Code	H
TKHDB2	50
TKHDB3	75
TKHDB4	100
TKHDB6	150

## Tray to Channel Klip



Part Code	Suitable for Tray Type
CHTR25	KLMR
CHTR50	KLHR

## Basket to Channel Klip



Part Code
UFC41M