

Single Channel Cantilever Arm

(2 Hole)

Part Code	Arm Length (mm)
CARMSCP150GM	150
CARMSCP300GM	300
CARMSCP450GM	450
CARMSCP600GM	600
CARMSCP750GM	750
CARMSCP900GM	900



Short Spring Channel Nuts

Part Code	Thread Size
UCM6/S	M6
UCM8/S	M8
UCM10/S	M10
UCM12/S	M12



Sold in packs of 100.

Back to Back Cantilever Arm

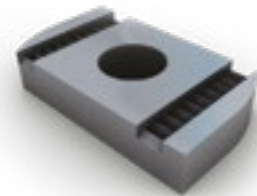
(2 Hole)

Part Code	Arm Length (mm)
CARMBBP150GM	150
CARMBBP300GM	300
CARMBBP450GM	450
CARMBBP600GM	600
CARMBBP750GM	750
CARMBBP900GM	900



Channel Nuts No Spring

Part Code	Thread Size
UCM6/N	M6
UCM8/N	M8
UCM10/N	M10
UCM12/N	M12



Sold in packs of 100.

Cone Point Bolts

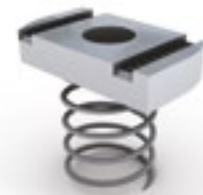
Part Code	Thread Size (mm)
M10x40/CPB	M10x40



Sold in packs of 100.

Long Channel Spring Nuts

Part Code	Thread Size
UCM6/L	M6
UCM8/L	M8
UCM10/L	M10
UCM12/L	M12



Sold in packs of 100.

Threaded Rod

Part Code	Thread Size
M6R3	M6
M8R3	M8
M10R3	M10
M12R3	M12



Supplied in 3m lengths.

Drop In Anchors

Part Code	Thread Size
M6A	M6
M8A	M8
M10A	M10
M12A	M12



Sold in packs of 100.

Roofing Nuts & Bolts

Part Code	Thread Size (mm)
M6X12RNB	M6x12
M6X16RNB	M6x16
M6X20RNB	M6x20
M6X25RNB	M6x25
M6X30RNB	M6x30
M6X35RNB	M6x35
M6X40RNB	M6x40



Other sizes available. Please ask for details.

Rod Joiners

Part Code	Thread Size
M6RJ	M6
M8RJ	M8
M10RJ	M10
M12RJ	M12



Sold in packs of 100.